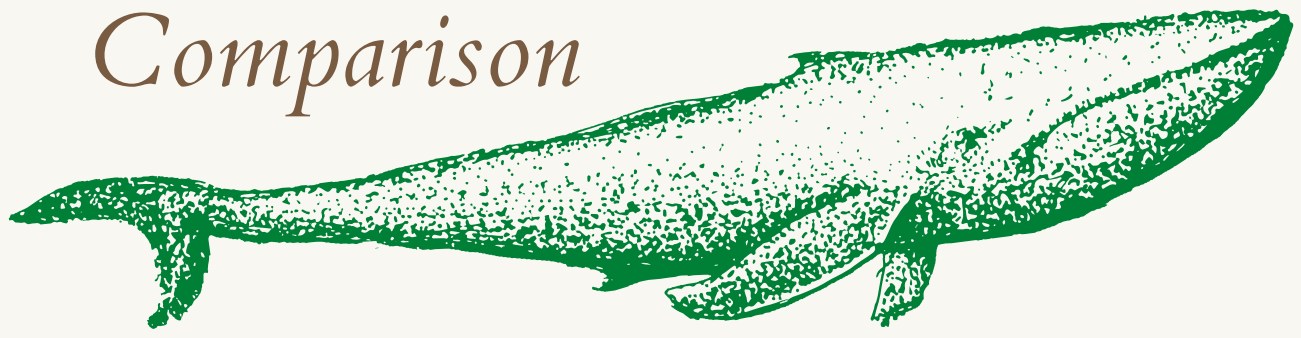


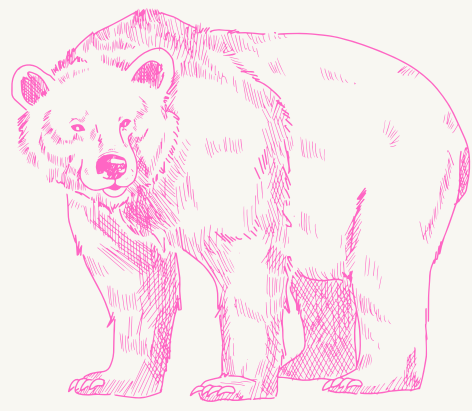
Risks in Regional Anesthesia

*** No agreed upon incidence in the literature

Relative Risk Comparison



Very common
1 in 10



Common
1 in 100



Uncommon
1 in 1,000

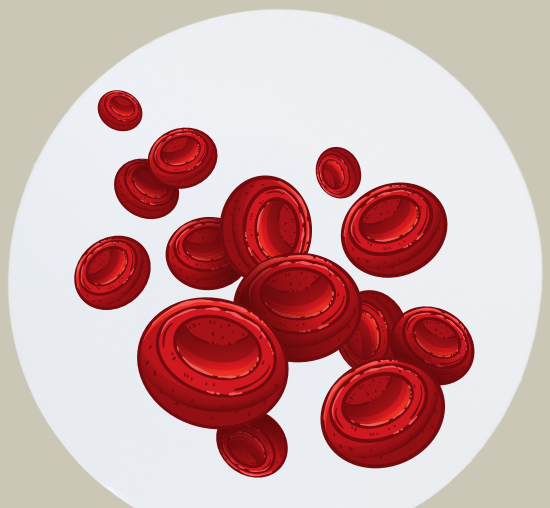


Rare
1 in 10,000

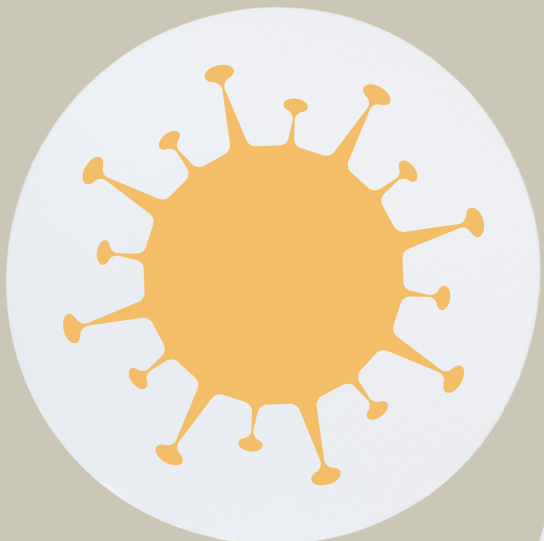


Very Rare
1 in 100,000

General Risks For All Blocks



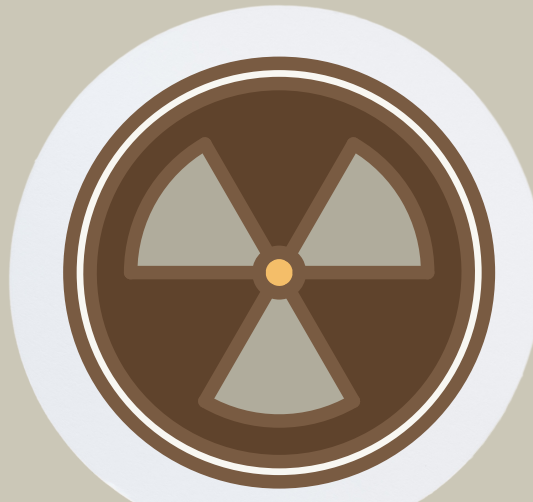
Bleeding



Infection



Block Failure



LAST



Nerve Injury



Intravascular Injection

Specific Risks

Interscalene



Phrenic Nerve Palsy



Hoarse Voice



Horner's Syndrome



Intrathecal Injection

Supraclavicular



Phrenic Nerve Palsy



Hoarse Voice***



Horner's Syndrome***



Pneumothorax

Paravertebral



Hypotension



Intrathecal Injection



Horner's Syndrome***



Pneumothorax

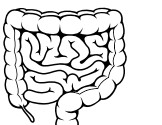


Bilateral Block

Lumbar Plexus



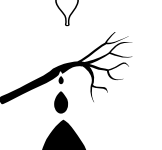
Intrathecal Injection***



Damage to Viscera***



Epidural Spread***



Retroperitoneal Hematoma***

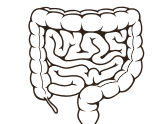


Psoas Abscess***

Abdominal Wall



Intraperitoneal Injection***

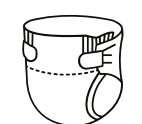


Damage to Viscera***



Femoral Nerve Palsy***
(Ilioinguinal Nerve Block)

Pudendal



Anal Leakage***

Lower Extremity



Falls***

Neuraxial

Common Events



Hypotension



Pruritis



Urinary Retention



Pain on Injection

Uncommon Events



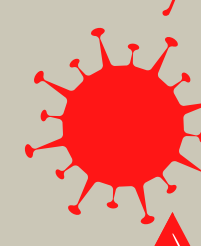
Post Dural Puncture Headache

Rare Events



Permanent Nerve Damage

Very Rare Events



Epidural Abscess
Meningitis



Epidural Hematoma